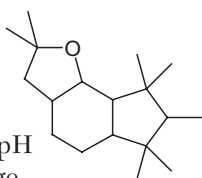


# Raw Material Bulletin

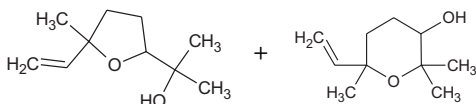
Want to connect with a supplier? Contact the Editor in Chief at [jallured@allured.com](mailto:jallured@allured.com).

IFF has introduced **Amber Xtreme**, a high-frequency amber woody molecule that provides body and base to fragrance formulations with excellent substantivity on skin and cloth. The ingredient performs in all pH media and is effective at trace to 0.5% dosage.



**Natural Taste Consulting** features **natural yogurt fat modulators**, which can be used in dairy applications to modulate the acidic taste found in nonfat yogurt while adding a creamy succulence to the taste and mouthfeel. Use level is 0.1–0.2% as consumed. This ingredient is worldwide natural, kosher, vegetarian and non-GMO.

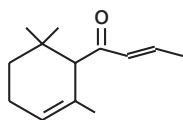
The company also offers **l-linalool oxide** (FEMA# 3746), which occurs naturally in green and black teas. Organoleptically, it has fresh, sweet, floral and woody notes that add depth and sweetness to tea and lemon flavors. The typical use rate for this worldwide natural and kosher ingredient is 0.05–10 ppm in finished products.



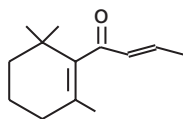
**Massoia lactone natural** (FEMA# 3744, CAS# 54814-64-1) from **Berjé** is a nearly colorless mobile liquid naturally derived from the bark of the Indonesian *Cryptocaria massoia* tree. It has a creamy, milky, coconutlike taste with lingering piña colada accents when used at 5 ppm in flavors. This material's food grade and kosher statuses make it suitable as an enhancer for baked goods, beverages or milk products.

The company also offers **butyl butyryl lactate** (FEMA# 2190, CAS# 7492-70-8), which produces buttery, milky, mildly cheeselike taste characteristics and a creamy mouthfeel when used at 50 ppm in dairy flavors. At 1% in fragrances, this ingredient creates a fatty, waxy and dairylike aroma. Suggested applications are cheese, frozen dairy and milk products.

**Organica Aromatics Corp.** features  **$\alpha$ -damascone** (FEMA# 4088, CAS# 24720-09-0), also known by its chemical name of (E)-1-(2,6,6-trimethyl-2-cyclohexen-yl)-2-buten-1-one, which is a colorless to pale yellow liquid that is soluble in alcohol. This kosher and halal-certified ingredient has an odor profile that has a fruity, floral, natural rose character with a complexion of apple, mint and blackcurrant-minty-plum. Suggested applications include rose perfumes and flavors.



The company also offers  **$\beta$ -damascone** (FEMA# 3243, CAS# 23726-91-2), which is a pale yellow to yellow liquid that is soluble in alcohol, kosher and halal-certified. Also known by the chemical name 2-buten-1-one,1-(2,6,6-trimethyl-1-cyclohexen-1-yl), this ingredient has a fruity, floral, fresh, green, woody, rose character with a sophisticated plum, honey and blackcurrant aroma. It can be used in fragrances and cosmetics, as well as tobacco and food flavors.



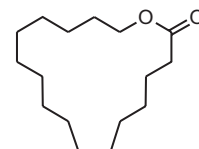
**Sigma-Aldrich** offers **ethyl myristate, natural, 98%, FG** (FEMA# 2445, CAS# 124-06-1), which is a natural, kosher, food-grade ingredient with sweet, waxy and creamy taste characteristics. Its odor characteristics are sweet, waxy, violet and orris. Its suggested uses include fat in flavor, and coconut, currant, cream, honey and violet in fragrance.

The company also offers **2-acetoxy-3-butanone, natural, 99%, FG** (FEMA# 3526, CAS# 4906-24-5), which is a natural, kosher, food-grade ingredient with fruity, fleshy, rumlike, grape and winey taste characteristics. Its odor characteristics are pungent, sweet, creamy and buttery. Suggested uses in flavor include apricot, cherry and cream soda. In fragrance, it can be used in almond, apple, currant, arinca and blueberry applications.

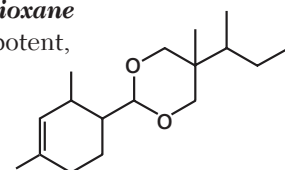
**Mentha piperita oil** (FEMA# 2848; CAS# 8006-90-4; natural) from **Aromatic & Allied Chemicals** is a colorless, pale yellow or pale greenish-yellow liquid obtained by steam distillation of natural *Mentha piperita* leaves. Suggested applications include confectionery, mouth fresheners, chocolates, chewing gum, cough drops, analgesic balms, inhalers, tobacco products, medicated oils and toothpaste.

On a similar note, the company's **spearmint oil** (FEMA# 3032; CAS# 8008-79-5; natural) is a naturally colored pale yellow liquid with a spicy odor. Obtained by steam distillation of natural spearmint leaves, its suggested applications include confectionery, mouth fresheners, chocolates, chewing gum, cough drops, analgesic balms, inhalers, tobacco products, medicated oils and toothpaste.

**Dihydroambrettolide extra pure** (CAS# 109-29-5) from **CS International** is a colorless to very pale yellow oily liquid or opaque crystalline mass that has a typically musty, sweet odor of great tenacity. It is insoluble in water and can be used in feminine or masculine prestige and fine fragrance creations, and cosmetic applications in which a leave-on effect is desired.



**Primechem** supplies **2(2,4-dimethylcyclohex-3-ene-1-yl)-5-methyl-5-(1-methylpropyl)-1,3-dioxane** (CAS# 117933-89-8), which has a potent, dry, radiant, woody and amber odor. Suggested applications include fine fragrance, fabric and personal care.



The company also offers **3-(2,2-dimethyl-3-hydroxypropyl)toluene** (CAS# 103694-68-4), which has powerful floral and fresh lily odor characteristics. Suggested applications are in lily of the valley and fruity-floral fragrances for detergent powder, fabric softener and soap applications.

